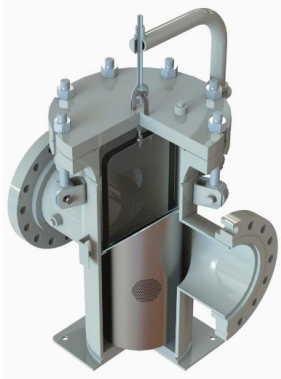


E-FLOW STRAINER

Strainer is an in-line pipe device that is used for purification, filtration or separation of solid from liquid. Strainer is commonly used in order to protect expensive and important field equipment from potential damage (e.g. unwanted solid matters) and eventually, minimizing production downtime as well as preventive maintenance. This is utmost importance as minimizing downtime means maximizing the profit.

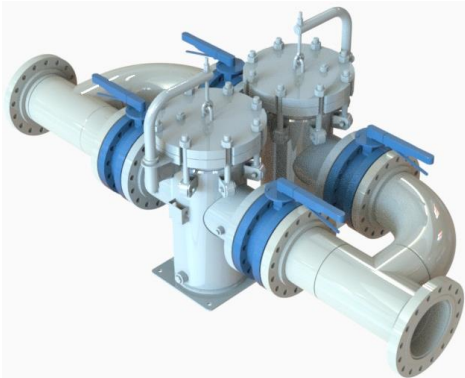
SIMPLEX & DUPLEX BASKET STRAINER



SIMPLEX BASKET STRAINER (FABRICATED TYPE)
WITH DAVITT ARM



SIMPLEX BASKET STRAINER (CAST TYPE)
WITH YOKE COVER



DUPLEX BASKET STRAINER (BUTTERFLY VALVE H-TYPE)
WITH DAVITT ARM



DUPLEX BASKET STRAINER (3-WAY BALL VALVE TYPE)
WITH HINGE OPENING

- Size : Up to 12" for cast type; Up to 36" for fabricated type
- Type : Fabricated, cast
- Design : Simplex, duplex butterfly valve H-type, duplex 3-way ball valve type
- Material : Carbon steel up to Super Duplex Stainless Steel and etc.
- Connection : ASME B16.5 flanged
- Vent / Drain : Coupling, flange, valve
- Closure : Quick release bolt, stud bolt & nut, yoke
- Flange lifting : Davitt arm, hinged type, eye lug
- Filter element : Perforation plate with or without wire mesh, up to 150 micron
- Filter element design : Cylinder, bathtub, wave
- Customized design of filter element to suit desirable opening ratio

STRAINER BASKET



STRAINER BASKET
(PERFORATION TYPE)

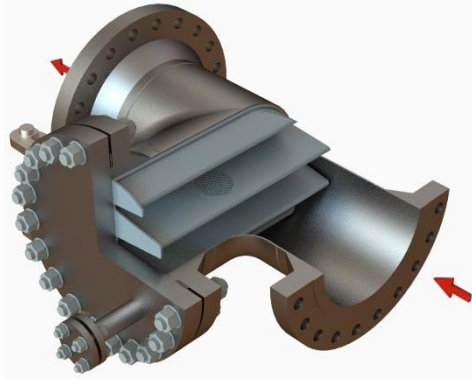


STRAINER BASKET
(WEDGE WIRE TYPE)

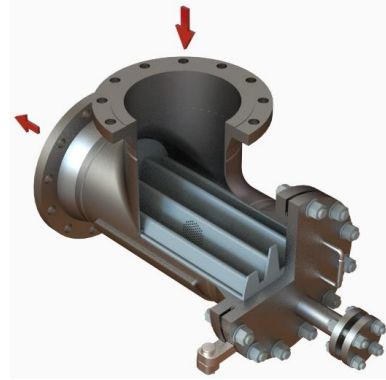
- Size : Up to 36"
- Type : Perforation, wedge wire, up to 150 micron
- Design : Cylinder, bathtub, wave
- Material : Carbon steel up to Super Duplex Stainless Steel and etc.
- Lifting : Handle
- Flow direction: Flow in to out (FITO), flow out to in (FOTI)

E-FLOW STRAINER

TEE STRAINER



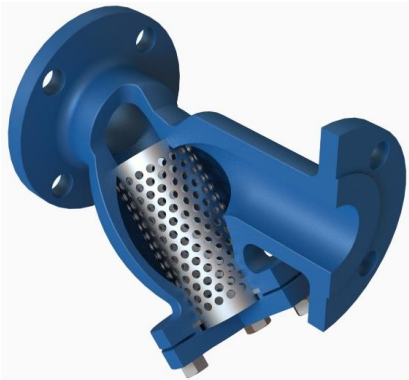
T-STRAINER (STRAIGHT FLOW TYPE)



T-STRAINER (ANGLED FLOW TYPE)

- Size : Up to 12" for cast type; Up to 36" for fabricated type
- Type : Fabricated, cast
- Material : Carbon steel up to Super Duplex Stainless Steel and etc.
- Connection : ASME B16.5 flanged
- Vent / Drain : Coupling, flange, valve
- Flow direction : Straight flow, angled flow
- Closure : Stud bolt & nut
- Flange lifting : Hinged type
- Filter element : Perforation plate with or without wire mesh, up to 150 micron
- Filter element design : Cylinder, bathtub, wave
- Customized design of filter element to suit desirable opening ratio

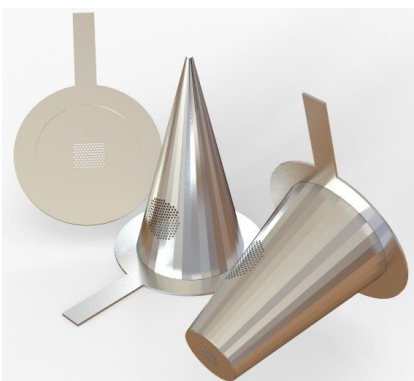
Y-STRAINER



Y-STRAINER (CAST TYPE)

- Size : Up to 12"
- Type : Cast
- Material : Carbon steel up to Super Duplex Stainless Steel and etc.
- Connection : ASME B16.5 flanged
- Drain : Coupling, flange, valve
- Closure : Stud bolt & nut
- Filter Element: Perforation plate with or without wire mesh, up to 400 micron

TEMPORARY STRAINER



TEMPORARY STRAINER (FROM LEFT TO RIGHT:
PLATE, CONICAL BASKET TYPE)

- Size : Up to 36"
- Type : Plate, conical, basket
- Material : Carbon steel up to Super Duplex Stainless Steel and etc.
- Connection : FF, RF, RTJ, with or without serrated surface
- Lifting : Handle
- Filter Element: Perforation plate with or without wire mesh, up to 150 micron